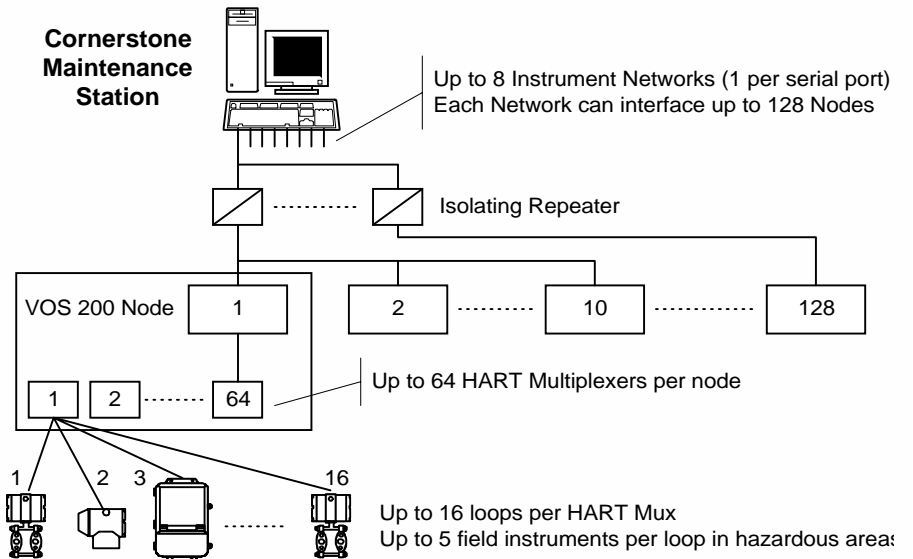




R. Stahl ComLib

- ◆ On-line Interface to HART[®] Instruments
- ◆ Remote Configuration & Diagnosis
- ◆ Automated Database Creation



Overview

The Cornerstone **STAHL HART Management System Communication Library (ComLib)** provides the software connection between a computer running Cornerstone Base Station or Configurator software and networks of HART instruments connected to the STAHL HART Management System. The STAHL HART Management System hardware configurations supported by the ComLib are the STAHL I.S.1, VOS200, ICS 1000, ICS PAK, and ICS Modul systems.

Communicate with attached HART instruments, even in intrinsically safe locations. Remotely configure, diagnose, trim, maintain, and document your HART devices. Add this solution to current control applications to provide an essential window onto critical instrumentation status.

Use this combined hardware and software solution to achieve dramatic labor savings by eliminating unnecessary trips to the plant floor.

Instrument Database:

- ◆ Add instruments upon connection
- ◆ Store recall parameters
- ◆ Access diagnostic information
- ◆ Monitor process variables

With Instrument Status Monitor:

- ◆ "Auto-Learn" all attached devices
- ◆ "Auto-Track" configuration changes

Cornerstone[™]
The Open Platform for Instrument Management

Stahl ComLib Functions

- Network initialization - restarts each multiplexer on the network
- Configure node description, message, communication settings, and scan parameters
- View node status and performance information, and adjust operational parameters
- Enable/disable node operation
- Add/remove instruments from on-line access list

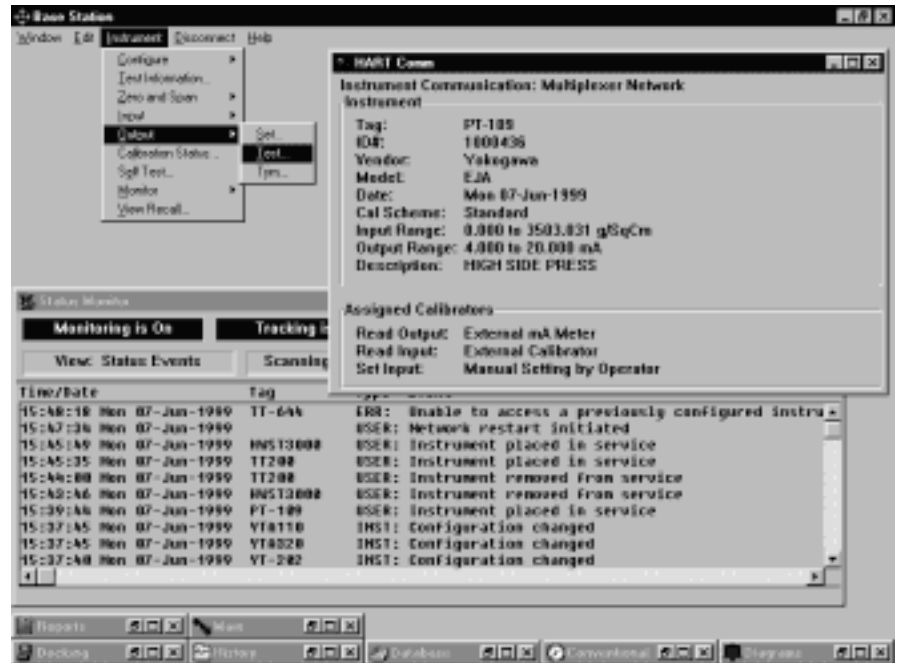
Specifications

- Communications: 9.6 Kbps
- HART Master mode: Primary or Secondary
- The Stahl ComLib software is available in five capacities:

	Small	Med	Large	Very Large	Very Large
Instruments:	196	512	2000	8000	8000
Networks:	4	4	4	4	8
Nodes/Net	128	128	128	128	128

Requirements

- Cornerstone Base Station or Configurator software
- Microsoft Windows 98, Windows NT, Windows 2000, or Windows XP
- Stahl HART Management System hardware and software, including Stahl RS-485 to RS232 converter where appropriate
- One RS-232 port per instrument network



DDE Access to HART Instrument Data

Using the Cornerstone Extended DDE interface, other Windows applications may retrieve HART Process variables, determine device status, read **and write** HART parameters, and receive notification of changes in HART parameters.

BENEFITS

- Unified instrument data base speeds installation and commissioning
- Remote instrument access reduces operation and maintenance costs
- Knowledge of instrument status and digital process variables complements existing control strategies
- Automated record keeping aids compliance with safety and quality audits

Cornerstone and the Cornerstone logo are trademarks of Applied System Technologies, Inc. The Stahl HART Management System is a product of R. Stahl Schaltgerate GmbH. Windows is a trademark of Microsoft Corporation. HART is a registered trademark of the HART Communication Foundation.

© Copyright 2005 Applied System Technologies, Inc. All rights reserved. Specifications subject to change without notice.

13 May 2005
710-000015-005



applied system technologies, inc.
p.o. box 309, dunnellon, florida 34430

Telephone: (352) 465-0201
WEB: cornerstone-software.com