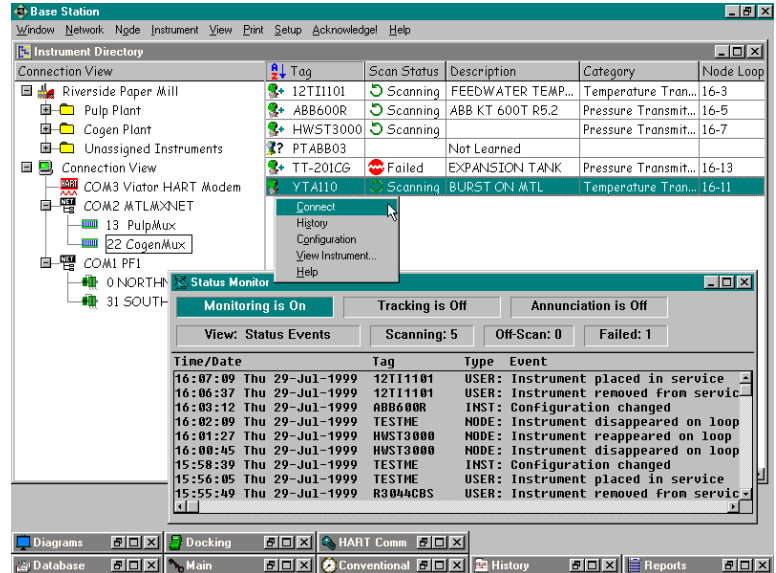




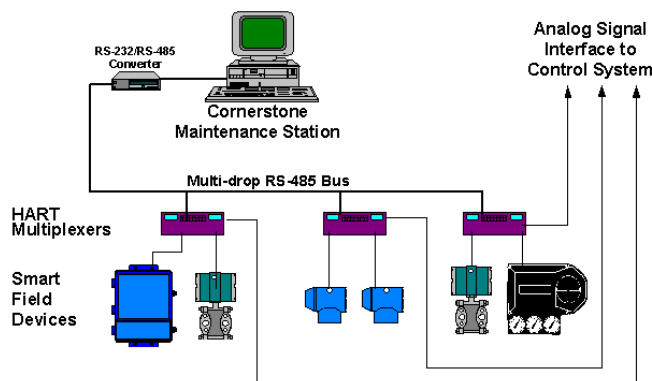
- ◆ **Detect status changes in field devices.**
- ◆ **Automate building and updating your instrument database.**
- ◆ **Speed up commissioning by validating “as installed” device configurations.**
- ◆ **Track and automatically record configuration edits made in the field.**



Cornerstone™ Instrument Status Monitor (ISM) adds device status display, network learn, and configuration tracking features to Cornerstone Base Station or to Cornerstone Configurator. ISM network functions help you realize the full digital benefit of HART interoperability. ISM complements and enhances your existing control solution, without forcing the adoption of a new strategy.

ISM polls networks of HART multiplexers to scan instruments located throughout the plant. This scan retrieves HART process variable and status data. Status changes are posted in the Status Monitor window, and scan status updates select display fields, such as those in the graphical Instrument Directory.

### Cornerstone Maintenance Station HART “Smart” Network



A special ISM function performs an Enhanced Network Learn. This powerful feature automates the addition of many new devices to the database in one operation, rather than requiring separate connections.

You may choose not to run certain ISM functions continuously, but may invoke them for periodic updates. For example, the Configuration Change Tracking option could be used to detect configuration changes made in the field in the last week. This option automatically updates the database to the current instrument configuration. A history record of the changes is created, which makes it possible to reload the previous parameter settings, if desired.

ISM running on a central Cornerstone maintenance station delivers significant time and labor savings. Using the status provided by ISM to identify potential problems, Base Station or Configurator then give you the ability to connect, configure, self-test, trim, monitor, and diagnose without being forced to send a technician to the instrument location every time.